

# 富安电子（南通）有限公司

FUANTRONICS (NANTONG) ELECTRONICS CO., LTD

## 承认书

APPROVAL SHEET

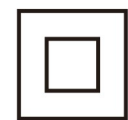
产品/Product:	LED 驱动/ LED Driver
客户/Customer:	
客户型号/Model:	
派锐型号/Model:	PEIH-A2 Series
日期/Date:	2021-05-15

编制/PREPARED	审核/CHECKED	批准/APPROVED
钱芬/Qian Fen	孟冬冬/Simons Meng	马久金/Mark Ma

客户确认 /Customer Signature	
--------------------------	--

(收到此份承认书, 请签字回传)

(Received this acknowledgement, please sign and return)



## 1. 变更履历/Change resume

版本/Versions	变更事项/ Change project
V1.0 2021/04/26	初版/First edition
V2.0 2021/05/18	增加型号/ Increase the model

## 2. 产品特性/Features

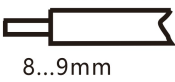
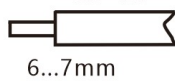
输出模式/Output Type	恒流/ Constant current
防护等级/IP Grade	IP20
绝缘等级/Insulation Class	Class II
保护功能/Protection	短路保护/Short circuit Protection, 过载保护/Overload Protection, 空载保护/No-load Protection, 过温保护/Over temperature Protection
输出特性/ Output Features	隔离/Isolation
证书/Certification	TUV/GE/SAA/ CCC (25-45W)

## 3. 型号/ Modle

型号/Modle	输出电流/ Output Current	输出电压 /Output Voltage Range	空载电压 (±5%) /No load Voltage (±5%)	效率 /Efficiency
PEIH015C0300NSLPA2	300mA	35-52V	60V	85%
PEIH015C0350NSLPA2	350mA	30-44V	50V	85%
PEIH015C0400NSLPA2	400mA	26-40V	50V	85%
PEIH015C0450NSLPA2	450mA	24-36V	44V	85%
PEIH015C0500NSLPA2	500mA	21-32V	38V	85%
PEIH015C0550NSLPA2	550mA	19-29V	35V	85%
PEIH015C0600NSLPA2	600mA	17-26V	32V	85%
PEIH015C0650NSLPA2	650mA	15-22V	27V	85%
PEIH015C0700NSLPA2	700mA	15-22V	27V	85%
PEIH020C0300NSLPA2	300mA	48-70V	80V	85%
PEIH020C0350NSLPA2	350mA	40-62V	70V	85%
PEIH020C0400NSLPA2	400mA	36-55V	70V	85%
PEIH020C0450NSLPA2	450mA	32-48V	60V	85%
PEIH020C0500NSLPA2	500mA	29-43V	50V	85%
PEIH020C0550NSLPA2	550mA	26-39V	47V	85%

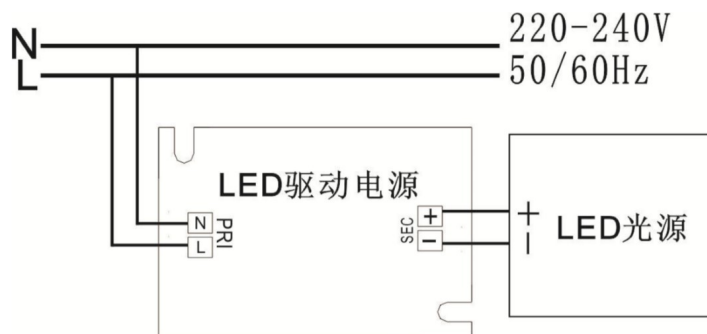
PE IH020C0600NSLPA2	600mA	24-36V	43V	85%
PE IH020C0650NSLPA2	650mA	20-31V	38V	85%
PE IH020C0700NSLPA2	700mA	20-31V	38V	85%
PE IH025C0400NSLPA2	400mA	40-65V	70V	86%
PE IH025C0450NSLPA2	450mA	40-65V	70V	86%
PE IH025C0500NSLPA2	500mA	30-50V	55V	86%
PE IH025C0550NSLPA2	550mA	30-50V	55V	86%
PE IH025C0600NSLPA2	600mA	27-42V	50V	86%
PE IH030C0300NSLPA2	300mA	70-95V	110V	87%
PE IH030C0350NSLPA2	350mA	50-76V	90V	87%
PE IH030C0400NSLPA2	400mA	50-76V	90V	87%
PE IH030C0500NSLPA2	500mA	40-55V	70V	87%
PE IH030C0550NSLPA2	550mA	40-55V	70V	87%
PE IH030C0650NSLPA2	650mA	27-42V	50V	87%
PE IH030C0700NSLPA2	700mA	27-42V	50V	87%
PE IH030C0720NSLPA2	720mA	27-42V	50V	87%
PE IH030C0730NSLPA2	730mA	27-42V	50V	87%
PE IH030C0740NSLPA2	740mA	27-42V	50V	87%
PE IH035C0350NSLPA2	350mA	70-95V	110V	88%
PE IH035C0450NSLPA2	450mA	50-76V	90V	88%
PE IH035C0600NSLPA2	600mA	40-55V	70V	88%
PE IH035C0750NSLPA2	750mA	27-42V	50V	88%
PE IH035C0760NSLPA2	760mA	27-42V	50V	88%
PE IH035C0800NSLPA2	800mA	27-42V	50V	88%
PE IH040C0400NSLPA2	400mA	70-95V	110V	88%
PE IH040C0500NSLPA2	500mA	50-76V	90V	88%
PE IH040C0650NSLPA2	650mA	40-55V	70V	88%
PE IH040C0700NSLPA2	700mA	40-55V	70V	88%
PE IH040C0850NSLPA2	850mA	27-42V	50V	88%
PE IH040C0900NSLPA2	900mA	27-42V	50V	88%
PE IH040C0920NSLPA2	920mA	27-42V	50V	88%
PE IH040C0930NSLPA2	930mA	27-42V	50V	88%
PE IH040C0940NSLPA2	940mA	27-42V	50V	88%
PE IH040C0950NSLPA2	950mA	27-42V	50V	88%
PE IH045C0450NSLPA2	450mA	70-95V	110V	88%
PE IH045C0550NSLPA2	550mA	50-76V	90V	88%
PE IH045C0750NSLPA2	750mA	40-55V	70V	88%
PE IH045C0950NSLPA2	950mA	30-45V	50V	88%
PE IH045C0960NSLPA2	960mA	30-45V	50V	88%
PE IH045C1000NSLPA2	1000mA	27-42V	50V	88%
PE IH045C1050NSLPA2	1050mA	27-42V	50V	88%

#### 4. 电气规格/Electrical Specifications

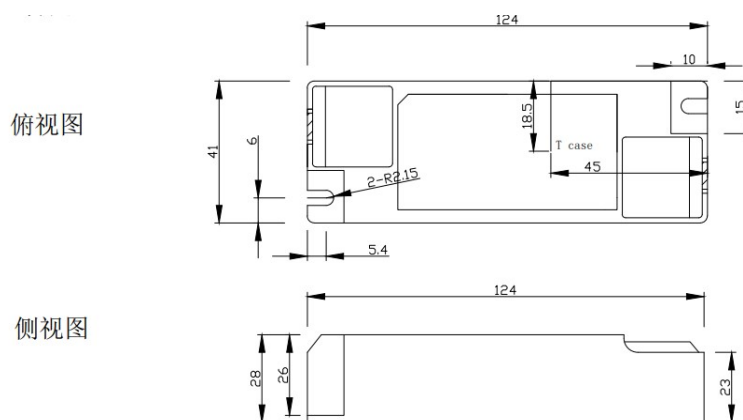
类别 /category	项目/Item	技术指标/Technical Norm
输入参数/ Input	额定输入电压/Rated Input Voltage	220-240VAC
	输入电压范围/Range of Input Voltage	180-277VAC
	输入频率/Frequency	50/60Hz
	输入电流/Input Current	≤0.25A (198VAC, full load)
	输入功率/Input Power	≤51.5W (230VAC, full load)
	功率因素/Power Factor	≥0.95 (230VAC, full load)
	谐波/THD	<20% (230VAC, full load)
	空载功耗/No-load Power Consumption	≤0.5W
输出参数/ output	电流精度/Current Accuracy	±5%
	最大输出功率/Max. Output Power	44.1W
	启动延时/Started Delay Time	≤0.5S (230VAC, full load)
	纹波电流/Current Ripple	<±3% Output current
保护特性/ Protection	短路保护/Short Circuit Protection	Auto Recovery
	过载保护/Overload Protection	Auto Recovery
	空载保护/No-load Protection	Auto Recovery
	绝缘耐压/Insulation voltage	I/P to O/P, 3KVac/1min
	绝缘电阻/ Insulation resistance	>100M ohm/500VDC
	漏电流/Leakage current	I/P to O/P <5mA
使用环境 /Environment	工作温度 Ta/Operation Temperature	-25...+50°C
	储存温度 Ts/Storage Temperature	-40...+85°C
	外壳温度/Tc/Enclosure Temperature	90°C
	湿度/Humidity	10%...90%RH
安装 /Construction	连接方式/Connection Method	接线端子/ Amphenol connector
	安装方式/Installation	独立外置式/Independent external
	输入线径&端头长度图示/ Input wire diameter&The length of the end drawing	0.75-1.5 <sup>2</sup>  8...9mm
	输出线径&端头长度图示/ Output wire diameter&The length of the end drawing	0.5-1.5 <sup>2</sup>  6...7mm
	输入接线端子规格/Input amphenol connector specification	CS200-00-350-02P-15-01AH/CS200-00-350-04P-15-00AH
	输出接线端子规格/Output amphenol connector specification	CS200-00-350-02P-1Y-108AH/CS200-00-350-04P-1Y-210
	尺寸/Dimension	124*41*28mm
	安全标准/Safety Standards	EN61347-1:2015, EN61347-2-13:2014/A1:2017, EN62493:2015, AS/NZS IEC61347. 2. 13:2013

检验标准 /Standards	电磁兼容标准/EMC Standards	, AS/NZS 61347.1:2016, GB19510.1-2009 EN55015:2013/A1:2015, EN61000-3-2:2014, EN61000-3-3:2013, EN61547:2009, GB/T17743.2017
	浪涌/Surge	L-N/2KV
其他/Others	环保/RoHS	Complied to 2011/65/EU
	寿命/Life Time	50000h @50°C (Ta)/90°C (Tc)
	Warranty/质保	5years
备注/Remark	<p>1. 如未特殊说明, 所有规格参数均在输入电压为 230VAC, 额定负载, 25°C环境温度下进行测量。Unless otherwise specified, all specification parameters are measured at input voltage of 230VAC, rated load and ambient temperature of 25°C.</p> <p>2. 电源被视为一个元件与终端设备结合使用, 因为 EMC 受整套装置的影响, 终端设备制造商需对整套装置重新进行 EMC 确认。Power supply is considered as a component and used in combination with terminal equipment, because EMC is affected by the whole set of equipment, the manufacturer of terminal equipment needs to re-emc confirm the whole set of equipment.</p>	

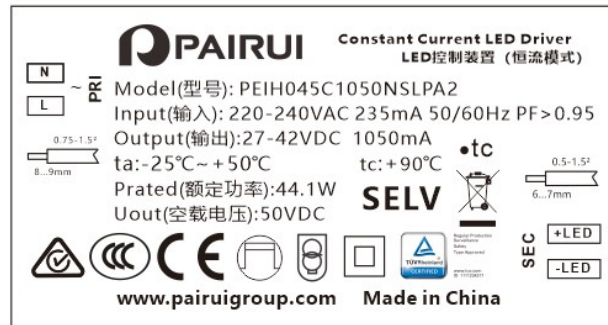
## 5. 安装说明/Installation



## 6. 外观尺寸/Dimensions (单位/Unit: mm)



## 7. 标签/Label



示例标签/The sample lable

## 8. 装箱信息/Packing information

纸箱尺寸/ Carton L*W*H (mm)	数量/箱 Pcs/Carton	净重/个 Net weight/Pcs (kg)	净重/箱 Net weight/Carton (kg)	毛重/箱 Gross weight/Carton (kg)
620*260*185	120	0.1	12	13.5